

1. 功能描述

Phoenix II GP0XL144C7 是一款支持 2/4 组 eDP 信号输出的专用芯片（GP02L144C7：2 组 eDP，GP04L144C7：4 组 eDP），能够同时驱动 1~4 个 eDP 接口的 LCD 屏显示，尤其适用于 LCD 屏的老化测试用途。

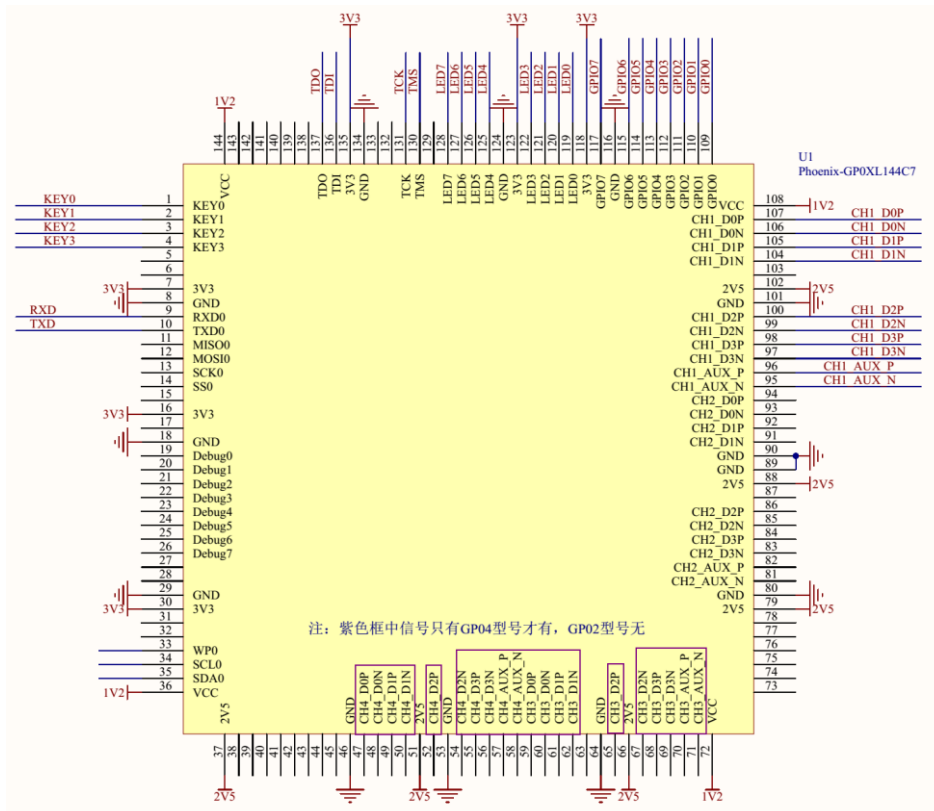
2. 器件特性

- 标准：eDP 1.4
- 速率：1.62 ~ 5.4Gbps
- 通道数量：
 - 1) GP02L144C7：4 Lanes * 2 组
 - 2) GP04L144C7：4 Lanes * 4 组
- 按键：4 个
- LED 状态显示：8 个
- GPIO：8 个
- UART 串口：1 个
- 支持 E2PROM 存储配置参数

3. 封装及订货信息

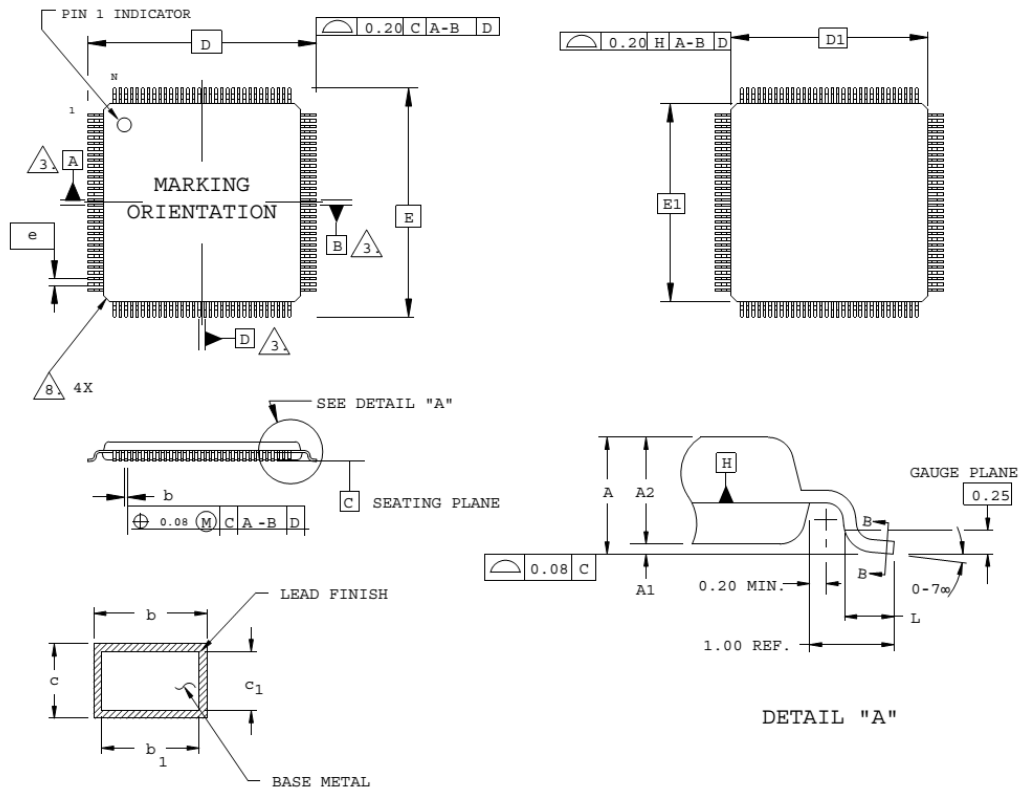
Ordering Part Number	Package
GP02L144C7	TQFP144, 22x22mm, 0.5mm pitch
GP04L144C7	TQFP144, 22x22mm, 0.5mm pitch

4. 器件引脚定义



5. 封装信息

Dimensions in Millimeters



SECTION B - B

NOTES:

1. DIMENSIONING AND TOLERANCING PER ANSI Y14.5 - 1982.
2. ALL DIMENSIONS ARE IN MILLIMETERS.
3. DATUMS A, B AND D TO BE DETERMINED AT DATUM PLANE H.
4. DIMENSIONS D1 AND E1 DO NOT INCLUDE MOLD PROTRUSION. ALLOWABLE MOLD PROTRUSION IS 0.254 MM ON D1 AND E1 DIMENSIONS.
5. THE TOP OF PACKAGE MAY BE SMALLER THAN THE BOTTOM OF THE PACKAGE BY 0.15 MM.
6. SECTION B-B: THESE DIMENSIONS APPLY TO THE FLAT SECTION OF THE LEAD BETWEEN 0.10 AND 0.25 MM FROM THE LEAD TIP.
7. A1 IS DEFINED AS THE DISTANCE FROM THE SEATING PLANE TO THE LOWEST POINT ON THE PACKAGE BODY.
8. EXACT SHAPE OF EACH CORNER IS OPTIONAL.

SYMBOL	MIN.	NOM.	MAX.
A	-	-	1.60
A1	0.05	-	0.15
A2	1.35	1.40	1.45
D	22.00 BSC		
D1	20.00 BSC		
E	22.00 BSC		
E1	20.00 BSC		
L	0.45	0.60	0.75
N	144		
e	0.50 BSC		
b	0.17	0.22	0.27
b1	0.17	0.20	0.23
c	0.09	0.15	0.20
c1	0.09	0.13	0.16